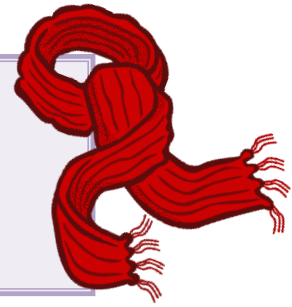


# TDDN Newsletter

## January 2022



### Happy New Year



Please ensure all your child's items of clothing are labelled. Lots of hats, scarves and gloves get misplaced at this time of year.

Please could you also ensure that all children (regardless of toileting abilities) have spare clothing. We charge for supplies such as nappies / wipes / socks etc.

#### Masks

To protect our staff, and each other, please could all adults wear face masks when collecting their child.



Thank you

#### MAKE HEALTHY SWAPS



#### SMALL CHANGES BIG DIFFERENCES

Dear Parents,

We hope you have enjoyed a safe festive break with your loved ones and managed to get some rest. We have restarted our book library for your children, so we hope you are making the most of bedtime stories. This will play a large part in helping your children to build a large vocabulary.

If your key worker has not yet shared a TDDN library book with you, please speak with them.

Happily, we did manage to get a delivery from Santa, we hope you and your children are enjoying the story books he dropped off for Christmas. We were also lucky that Santa came in to say hello to the children and read us some stories.



to all the new families that have joined us this term. Please talk to us about how your child is settling in. We look forward to any suggestions that may help them feel more at home. Please remember you will be invited to meet your child's key worker.

SAFEGUARDING - Documentation you will be expected to sign...

- Accident form
- Home accident forms
- Behaviour forms
- Safeguarding forms
- Medication permission slips

### Partnership with YOU!

A strong working partnership is vital for your children to thrive here at TDDN. We work hard every day to establish and maintain a strong and respectful partnership. The help that you give your children at home has a very significant impact on their learning. Your child's Key Worker will be sharing the goals that your children is working on for the following term with your child. Please speak to your child's Key Worker if you need any help to support your child.

## Mr David's Message

Dear Parents and Carers,

Welcome to all returning from our Nursery Christmas Holiday, also welcome to everyone who is joining us for the beginning of our new Spring Term. Our start to the new term is always very important to everyone.

Parents and children – either back from your holiday or just joining us, we look forward to getting to know you. We have new staff members also joining us who wish to meet you as well, alongside our many long serving members. All our staff are looking forward to helping everyone settle in.

This is when we do ask for some partnership working between our parents and our staff, especially Key Worker Staff. A good place for us to start is always when Library Books are being shared, and when introduced how they are to be looked after and kept safely when being read at home. Parents, please do help our tremendous staff who will wish to kindly and regularly communicate with you, especially when they are already appointed as a Key Worker for your children. These very professional, as well as important Staff members, will be leading your child's teaching and always seeking to describe all progress made for the children in Nursery.

We very much wish to work together with Dads and Mums, possibly other family members. We are all seeking encouragement for purposes of learning and improvement with many differing skills in differing lessons, hopefully supported with practice and learning at home. This will include helping the clarity of a child's speech, introducing less familiar words, how they are spoken and what they mean. Trying this together with children at home is a great way of encouraging learning and children very often wish to share what they have discovered. Parents will usually be greatly pleased when they see the effort so many of the youngest children will apply to their learning.

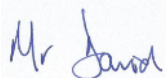
Any such working together will greatly surprise many parents, as working with a Key Worker helps bond with both a parent and child together. Please do try.

One further request - elsewhere in our January Newsletter, you will read guidance regarding teaching our children the vital importance of personal hygiene. Please do read the advice and help given to prevent spread of infections – the articles mention washing hands and using only a single toothbrush for each child or one adult.

Returning to the topic of books, we do hope all our children who did receive a book each as a Christmas presents at the end of last term from our nursery, HAVE STARTED using them with lots of help from parents. Thank you.

We hope your children very quickly become settled as well as very happy with us all at Training Depot Day Nursery. Please always contact a staff member should you have a tricky question with which you would like some help.

With very best wishes,



January 2022

Have you applied for a school for your child? For more information, please see the following link...

[https://m.luton.gov.uk/Page/Show/Education\\_and\\_learning/Schools\\_and\\_colleges/School%20admissions/transferring-to-a-new-school-or-academy/Pages/Starting-school-in-September.aspx](https://m.luton.gov.uk/Page/Show/Education_and_learning/Schools_and_colleges/School%20admissions/transferring-to-a-new-school-or-academy/Pages/Starting-school-in-September.aspx)

### Helping your children with speech

Chatting, reading and singing are some of the things you can do with your children. Young children will pronounce some words incorrectly. Instead of correcting them, reply to what they say and use the words they have mispronounced. Children will then learn from your positive model, without losing the confidence to speak. Toddlers and young children sometimes hesitate and repeat sounds and words when thinking what to say. Listen patiently. Do not say the words for them. Encourage children to use their words. If you are worried about your child's speech and language speak to your child's key worker for help and support.

## Transitioning to Tigers

Has your child moved to the Tigers? Do you need any help or support?

Please remember, in Tigers there is a greater expectation for independence with your child. They will be expected to self-register, remove their coats, find their pegs and hang them up, as well as put on their coats, shoes etc.

Your child should also be independently accessing the toilets. If you have any questions, please ask!

Also, please be patient when ringing the doorbell. It will take your child time to find their belongings and put on their coats, scarfs, gloves etc. They may well come home with them on back to front - please encourage them by practising at home!

**NHS**

**We must keep on protecting each other.**

  
HANDS FACE SPACE

STAY ALERT > CONTROL THE VIRUS > SAVE LIVES

### Calendar Dates

**Monday 3<sup>rd</sup> – Bank Holiday – No Nursery**

**Term Starts - Monday 4<sup>th</sup> January 2021**

**Belly Dancing -**

**Monday 10<sup>th</sup>**

**Monday 17<sup>th</sup>**

**Monday 24<sup>th</sup>**

### January 2022

| Sunday | Monday | Tuesday | Wednesday | Thursday | Friday | Saturday |
|--------|--------|---------|-----------|----------|--------|----------|
|        |        |         |           |          |        | 1        |
| 2      | 3      | 4       | 5         | 6        | 7      | 8        |
| 9      | 10     | 11      | 12        | 13       | 14     | 15       |
| 16     | 17     | 18      | 19        | 20       | 21     | 22       |
| 23     | 24     | 25      | 26        | 27       | 28     | 29       |
| 30     | 31     |         |           |          |        |          |

### Healthy Tips

1. Never use someone else's toothbrush; bacteria will be passed from one mouth to another, even after rinsing.
2. Baby's teeth should be brushed as soon as the very first one starts to break through the gums, using a toothbrush with a small head and soft bristles. A smear of fluoride toothpaste should also be used.



**Please Note: Failure to pay your child's fees may result in their place being offered to someone else. A late fee is charged should you be late to collect your child.**